

# soms

Quality of Industrial Supply



Welcome

“ no shortcuts

to quality”

التفوق للخدمات العصرية المتحدة ش.م.م  
Superiority of Modern Services United L.L.C.



# About us

---

A private 100 percent Omani company, that is established by experts in power plants, oil and gas, consulting, engineering and marine ship repairs. With our wide range of expertise we can offer the best services with the highest quality in the market.

SOMS works closely with its customers in the region to maximize the potential of every production. SOMS does this through its reliable services, its products with competitive solutions and its technologies that assists in optimizing investments and to make whatever production more safe, reliable, efficient and eco-friendly.



# Our vision

---

We believe there is "no shortcut to quality". This vision ensures that SOMS becomes and remains to be the best Omani company in the field.

# Our mission

---

Is to Provide quality services and materials to the clients through focusing on client specific needs and providing solutions to business problems. Thereby adding value through expertise whilst maintaining integrity, professionalism and independence on a short delivery.





# Our business

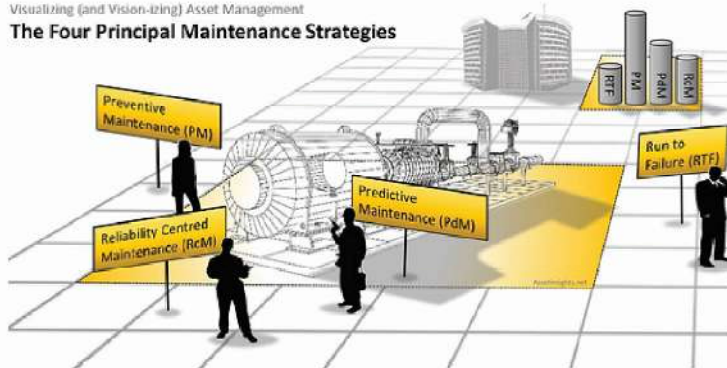
## Technical Services Supply

### Maintenance Services:

SOMS LLC provides a complete range of customized maintenance on a power, oil and gas stations. Incorporating the RCM, IPF & condition monitoring been developed on our maintenance strategies. Our specialized staff able to commissioning & executing the routine and corrective maintenance activities with a high focuses on safety and quality. Our own Staff, Services & Chain supply gave a confidence on maintaining the stations and attends its needs.

Visualizing (and Vision-izing) Asset Management

### The Four Principal Maintenance Strategies



### Services contract (long and short term)

We support our clients who operate in the following fields:

- ▲ Oil & Gas
- ▲ Energy (Power station)
- ▲ Process and petrochemical industries
- ▲ Water & Waste water treatment (Desalinations)

SOMS LLC ensured Quality, Health, Safety and Work Environment norms on its own personnel. The organization is dedicated to establish, implement & monitor the QHSE Management System and its objectives in accordance with the requirements of the International ISO Standards.

- |                                    |   |
|------------------------------------|---|
| ▲ Shutdown Supervisors             | ▲ Certified Welders and fabricators             |
| ▲ Gas turbine Technicians          | ▲ Pipes and equipment casing insulation fitters |
| ▲ Pump technicians                 | ▲ Certified riggers                             |
| ▲ Valve Technicians                | ▲ Scaffolders and scaffolding supervisors       |
| ▲ Electric Technician              | ▲ Painters                                      |
| ▲ HVAC Technicians                 | ▲ Technical Helpers                             |
| ▲ Motor & Generator Technicians    | ▲ Certified Riggers                             |
| ▲ Instrument & control calibration |   |





# Our business



## SHUTDOWN PERSONNEL

We have and continue the support in shutdown and outage needs of our clients in the region. We can source, trade test, locally accommodate, transport, payroll & mobilize/ demobilize specialist teams of personnel to carry out complete plant outages. We offer a proven end to end service with complete transparency to meet the client's specific needs.

## CALL-OFF CONTRACTS

Many of our clients require short term personnel on a call off basis. We can provide this service to meet client needs and ensure complete compliance. These contracts generally support commission & start up teams, inspection and NDT activities.

## ENGINEERING

Our competent parties and engineers to review the Design, sort the RCA "Root Cause Analysis" and LTS "LONG TERM SOLUTION":

It is our engineers who are willing to give you permanent solutions to your repetitive issues. They are there to assist you and keep you satisfied with their long term solutions.

## SCAFFOLDING SERVICES:

We undertake scaffolding contract works (installation and dismantling) for industrials and buildings, supply and installation of bill board for advertisements. We also rent out all scaffolding materials in addition to the trading of items.

Our competent and certified scaffolders and Inspectors together make all our projects very successful and brings us more clients across all the sultanate of Oman on regular basis.





# Our business



## WELDING AND FABRICATION:

To complement the overhauling and fitting section, SOMS has a fully equipped and trained team for welding and fabrication. We provide various types of welding procedures and are able to design and fabricate components of various shapes and sizes. Those qualified welders & fabricators for various grades of metals facilitate the repair and remanufacture of site piping and structural fabrication, erection and general welding services.

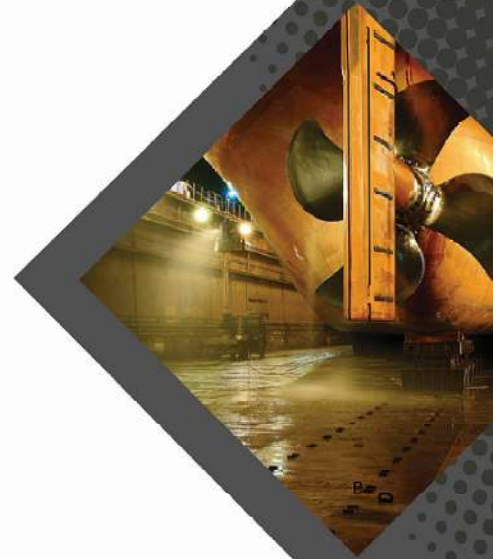
## MARINE SERVICES:

Professional team with excellent experience in ship repairs technique for commercial, special ship and yacht who can Main engines maintenance and overhauling. Generators maintenance and overhauling. Compressors maintenance and overhauling. All types of pumps: centrifugal and positive displacement maintenance and overhauling of heat exchangers overhauling and re-tubing Propulsion system maintenance and overhauling such as shaft line, propeller and steering gear, ropeller polishing.

## LOGISTICS:

Resourcing logistic Services and Supply Chain Management Company with leadership in Project cargo, Freight Forwarding, Road freight, Customs Clearance and Warehousing Domain. Our relation with those specialize in a total integrated Supply Chain solution to wide variety of Industry clients with a vast experience in real-world logistics and supply chain will allow us to provide a highly optimized and customized logistics solution for every client requirement with high focus on efficiency.

Keeping  
everything  
running.



# Our projects

## ONGOING PROJECTS

| Sr.N | PROJECTS   | CLIENTS  |
|------|--|--|
| 1    | Design , Fabrication & Installation of Structural Building with associated FIRE WATER STORAGE SYSTEM and SS316L PIPING                 | US AIRFORCE - MUSANNAH AIR BASE                          |
| 2    | Complete Maintenance of the Biggest Independent Combined cycle Power Station of (2000MW) In Oman                                       | SUR IPP-OMAN   |
| 3    | Design , Fabrication & Installation of Structural Supports, Installation of Storage Vessels, LPG Piping's for various projects in OMAN | NATIONAL GAS CO. , MUSCAT                                |
| 4    | Gas and Steam Turbine, pumps, Motors, Mechanical & Electrical Overhauling in Various Oil & Energy Fields                               | ORPIC,SUR IPP,GHUBRA POWER STATIONS and Other Industries |
| 5    | DESIGN , FABRICATION AND INSTALLATION of SS 316L & CS Piping including all required pipe supports, Hydrotest & NDT                     | OMAN CHLORINE SAOG/ SOHAR                                |
| 6    | Black Start Diesel Generator Overhauling & Commissioning   | manah power plant  |
| 7    | Fabrication and Supply of 6 Mln Kcal/Hr Thermal Oil Heating system for Surgical Gloves Plant, Thailand                                 | Innovative Gloves, Thailand                              |
| 8    | Maintenance of SCADA   | Oman Gas Company, Oman                                   |
| 9    | Gas pipeline project at Fahud facility   | Colossal Engineering Company                             |
| 10   | Turnaround of steam turbine at STOMO, Barka  | SIEMENS, Oman  |



# Our projects

## KEY EXECUTED PROJECTS

| Sr.N                 | PROJECTS  | CLIENTS   | EXECUTED YEAR     |
|----------------------|---|---|-------------------|
| <b>OMAN PROJECTS</b> |   |   |                   |
| 1                    | Construction of Fuel Gas Station Including the procurement & Installation of joule Thomson heater.  | IBRI POWER STATION-MUSCAT                                 | 2017<br>Completed |
| 2                    | DESIGN , FABRICATION AND INSTALLATION of MONO RAIL SYSTEM FOR SLAUGHTER HOUSE at SINAW MUNICIPALITY - (Fabrication & Installation 15 MT Steel )                               | MINISTRY OF MUNICIPALITY / AI MALIKY INTL. / SINAW        | 2016<br>Completed |
| 3                    | FABRICATION AND INSTALLATION of new Structural Warehouse at SAHAM Industrial Area for Spectrul line International LLC   | SECTRUM LINE INTL. LLC                                    | 2016<br>Completed |
| 4                    | Fabrication & Installation of SS Hand Rails, Car Parking shades, Cat Ladders & various other structural fabrication/Erection at MINISTRY OF DEFENCE SITE At Al Ansab - Muscat | MINISTRY OF DEFENCE - AL HASHMI AL RAWAS TRAD. & CONT. CO | 2016<br>Completed |
| 5                    | Fuel Gas Piping Installation  | GHUBRA POWER STATION-MUSCAT                               | 2016<br>Completed |
| 6                    | DESIGN , FABRICATION AND INSTALLATION of SS 316L & CS Piping including all required pipe supports, Hydrotest & NDT -  | OMAN CHLORINE SAOG/ SOHAR                                 | 2016<br>Completed |
| 7                    | FABRICATION AND INSTALLATION of new Structural Warehouse at SOHAR Industrial Area (Fabrication & Installation of 65 MT Steel )  | AL ARDH INTERNATIONAL                                     | 2015<br>Completed |
| 8                    | Construction of 3 water air cooling tower to cool the demin water   | BARKA -3 POWER STATION                                    | 2015<br>Completed |
| 9                    | Total Replacement Of Toxic Acid tanks,Pipes,Pumps,Etc. By following MSDS and taking safety precautions for hazardous materials  | SUR IPP-OMAN  | 2015<br>Completed |
| 10                   | Fabrication and Installation OF Fuel Oil Line and installation of Oil Filters for SIEMENS GT at MOD Power Plant.  | MOD - SIEMENS / NATIONAL MECHANICAL at RUSAYL POWER PLANT | 2015<br>Completed |
| 11                   | FABRICATION AND INSTALLATION OF STRAINERS AND ASSOCIATED METHANOL PIPE LINES, STRUCTURAL PLATFORMS for OMAN METHANOL CO. LLC SOHAR(8" & 10" Sch. 20 - 10% RT)                 | OMAN METHANOL CO. LLC/ WORLY PARSONS                      | 2015<br>Completed |

# Our projects

|    |   |   |                   |
|----|---|---|-------------------|
| 12 | FABRICATION AND INSTALLATION OF SS 304, SS316, CS & GI piping for (UEM - MAJIS) New Water treatment Plant at SIPC   | MAJIS / UEM INDIA LTD.                                    | 2015<br>Completed |
| 13 | FABRICATION AND INSTALLATION OF STRUCTURAL PLATFORM, STRAINERS AND ASSOCIATED METHANOL PIPE LINES for OMAN METHANOL CO. LLC SOHAR(8" & 10" Sch. 20 - 10% RT)  | OMAN METHANOL CO. LLC/ WORLY PARSONS                      | 2015<br>Completed |
| 14 | Fabrication and Installation OF Fuel Oil Line and installation of Oil Filters for SIEMENS GT at MOD Power Plant.  | MOD - SIEMENS / NATIONAL MECHANICAL at RUSAYL POWER PLANT | 2015<br>Completed |
| 15 | FABRICATION AND INSTALLATION OF STRAINERS AND ASSOCIATED METHANOL PIPE LINES, STRUCTURAL PLATFORMS for OMAN METHANOL CO. LLC SOHAR(8" & 10" Sch. 20 - 10% RT) | OMAN METHANOL CO. LLC/ WORLY PARSONS                      | 2015<br>Completed |
| 16 | Installation of Cyclone System and associated Sructural Platforms, and Civil foundation works for MAWARID MINING CO. LLC                                      | MAWARID MINING Co.  | 2014<br>Completed |
| 17 | Fabrication and Installation of 1.1 Km. 8" Fuel Oil Line for ORPIC JETTY Salalah Including Demolition two existing 8" line of 2.2KM(10% RT)                   | ORPIC/ AWS Engineering LLC/ MOTT MCDONALD SALALAH         | 2014<br>Completed |
| 18 | P91 PIPING INSTALLATION Nooter Erikson Boiler (HRSG) to Fuji Steam Turbine(300MW)   | SUR IPP-OMAN  | 2013<br>Completed |
| 19 | Construction and Maintenance WorkShop including the Installation of Lathe Machines  | SUR WATER DESALINATION-OMAN                               | 2013<br>Completed |
| 20 | Fabrication and Erection of Valve operating platform for installation of 16 nos. 32" Valve at ORPIC Sohar - Area 200 (Structural fab. And erection 35MT)      | ORPIC SOHAR- AL NADHA                                     | 2013<br>Completed |
| 21 | Fabrication and Installation of 320 Met. long 6" Sch. 10 SS 304 Process condensate line at OMAN METHANOL CO. LLC Plant Sohar (10% RT)                         | OMAN METHANOL CO. LLC/ WORLY PARSONS                      | 2013<br>Completed |
| 22 | FABRICATION & INSTALLATION OF WWT TANK SRTUCTURAL BUILDING INSIDE ORPIC SOHAR-  | ORPIC SOHAR - AL SAQAR (DUBAI)                            | 2013<br>Completed |



# Our Gallery

---



# Our Gallery

---





# Our Gallery

---



# Our Gallery

---





# Our Gallery

---



# Our Gallery

---





# Our Gallery

---



# Our Clients



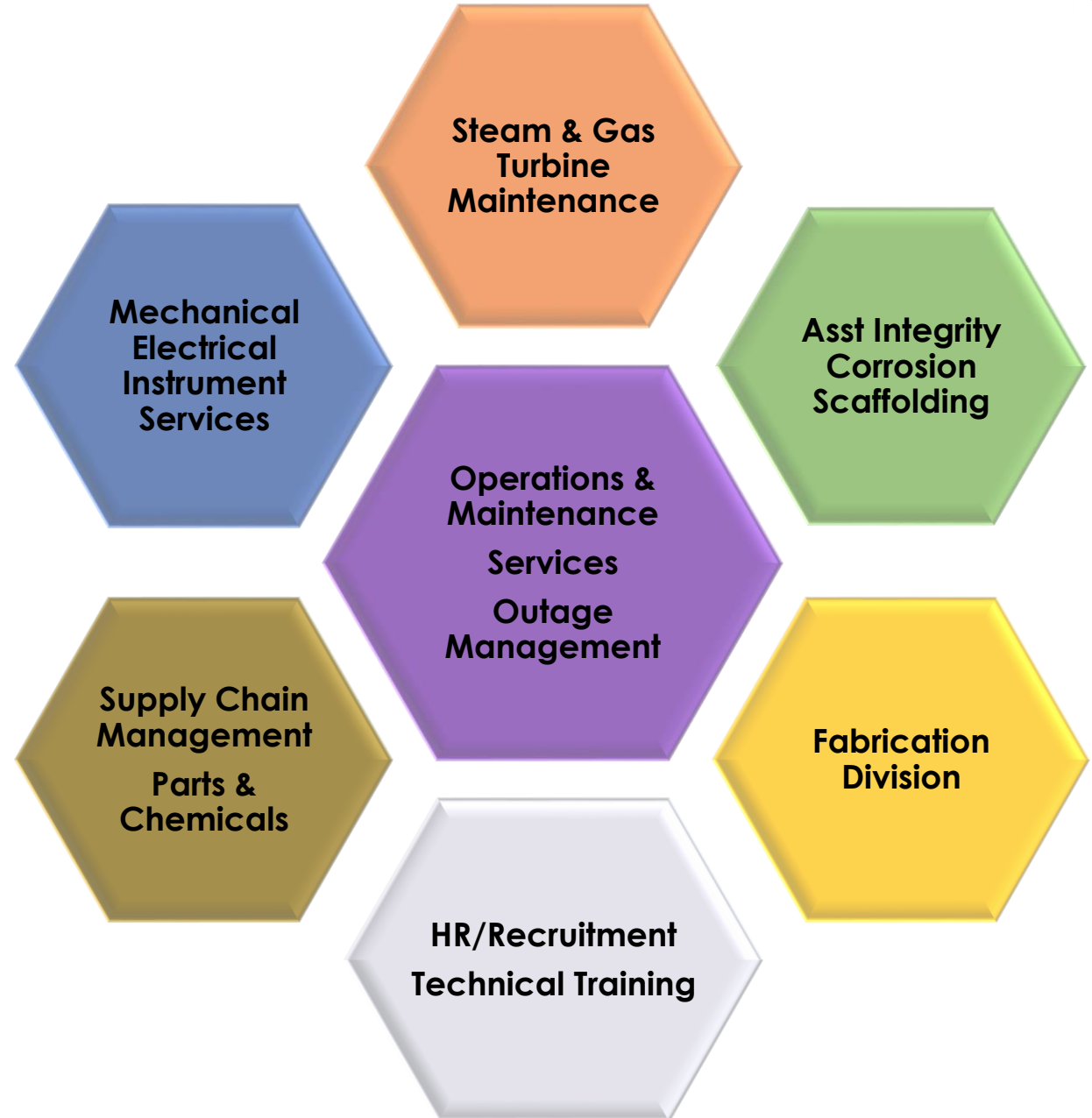
Superiority of Modern Services L.L.C  
Sultanate of Oman, Muscat, Al Azaiba,  
Way - 48, P.O Box: 1620, P.C: 111,  
Latitude: 23.5972059, Longitude: 58.3557856,  
Ph: 24508314, Web: www.somsgroup.net



# SOMS

- **SOMS** is one of the Leading and fast-growing Industrial Services Company for power plants, Oil & Gas and Refinery in the Sultanate of Oman.
- **Established in 2015** by the Experienced Engineering Professionals.
- It is a **100% Omani SME** Limited Liability Company
- Having more than 279 Permanent staff and temporary shutdown staff 287 with an **Omanization of More than 20%**
- With yearly revenue over **10M USD**









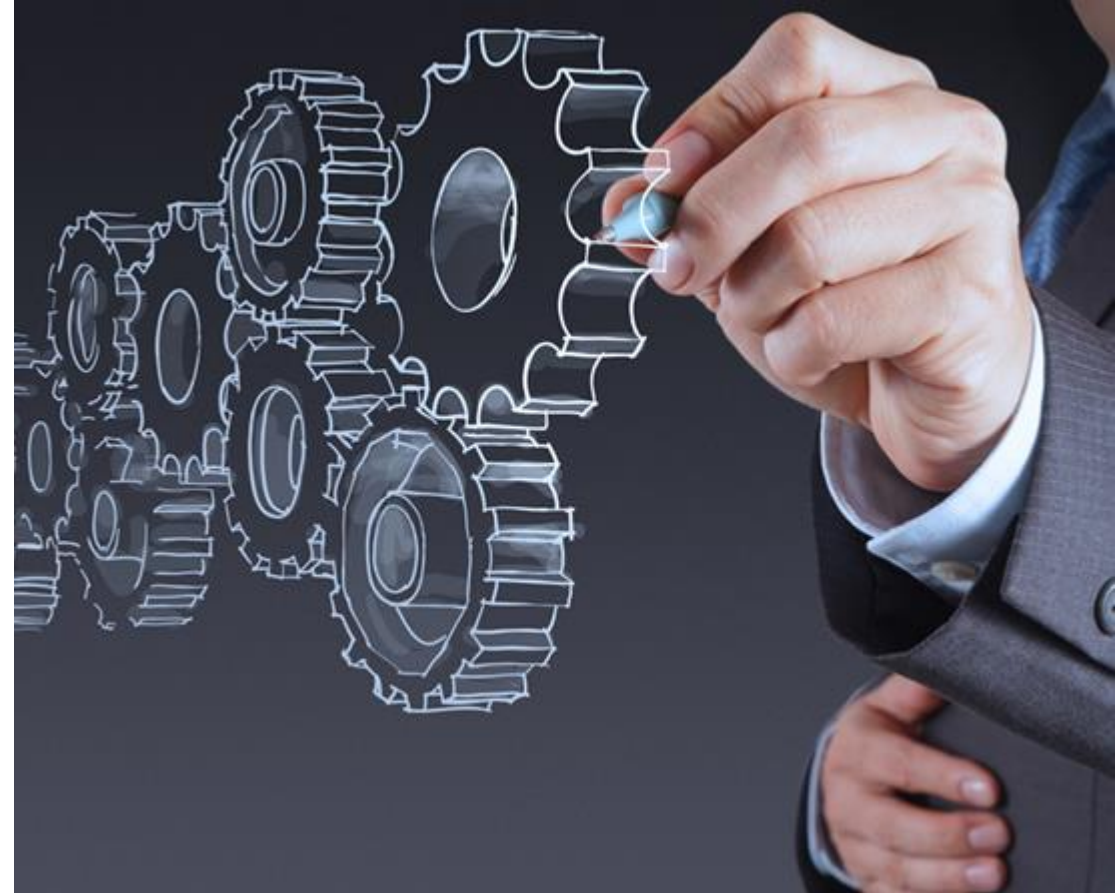
We are Present & Operating in the main Industrial Zones of Sultanate of Oman

- Muscat
- Sohar
- Barka
- Sur
- Fahud
- Jibal
- Duqm
- Raysut
- Salalah



# Engineering Services

- ✓ Revisit the detailed design while taking the power plant's concurrent problems into consideration.
- ✓ Reevaluate the PM philosophy that has been put into place and improve asset lifespan by incorporating best industrial PM practices.
- ✓ Assist in developing SOPs and procedures for all power plant processes in accordance with OEM standards.
- ✓ Siemens T3000 TCS/DCS Control System Trainings for Operational Staff
- ✓ DCS/PLC Routine Checks/Troubleshooting







# Omanization , Training & Development



- Full Package Training Programs
- Omanization Via Contractors Program
- Internal Development Program  
Focused on Job Competency profiling  
for each position title.
- Institutional Third-Party Management



## SOMS MoU with GT/ST Turbine workshop in India

- SOMS- High level Technical team visited the workshop for refurbishment of Gas and Steam Turbines to provide best Quality & Cost-effective Services/solutions to our Clients in Oman





# Instrument Calibration Services



- Comprehensive calibration services for various instruments
- Specialized expertise in pressure, temperature, DP, flow, radar and ultrasonic, and Pressure switches
- NIST traceable calibration standards
- Calibration certificates provided for all calibrated instruments
- On-site and off-site calibration services available



## INDUSTRIES- SPECIALIST IN TALENT AQUISITION

### Oil, Gas & Energy Sectors :

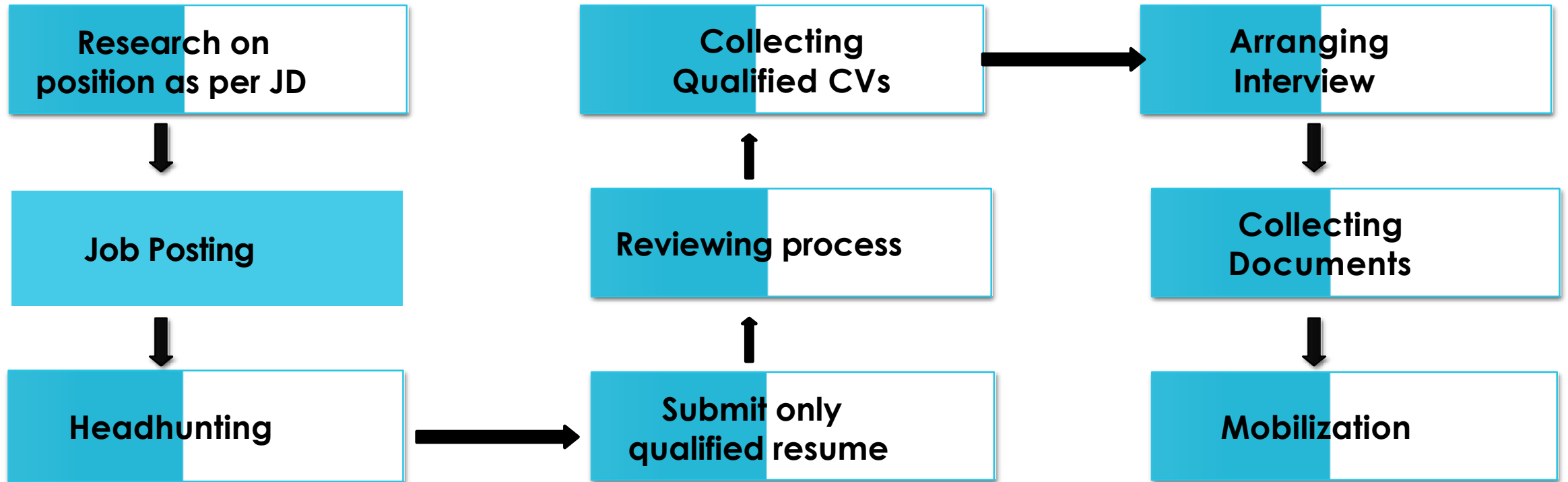
1. Refinery
- 3 Power Plant
- 4 Terminals
- 5 Industrial services





# OUR Professional Service Structure

Our Fast track end to end Recruitment & Mobilization  
of all Technical O&M positions



# OUR Professional Service Structure

## Our Fast track end to end Recruitment & Mobilization



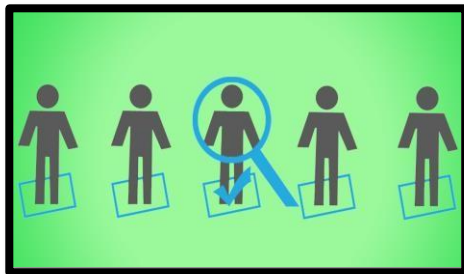
**Recruitment services**



**Visa**



**Interview Campaigns**



**Staffing**



**Mobilization**



**Payroll Management**

†





**soms**

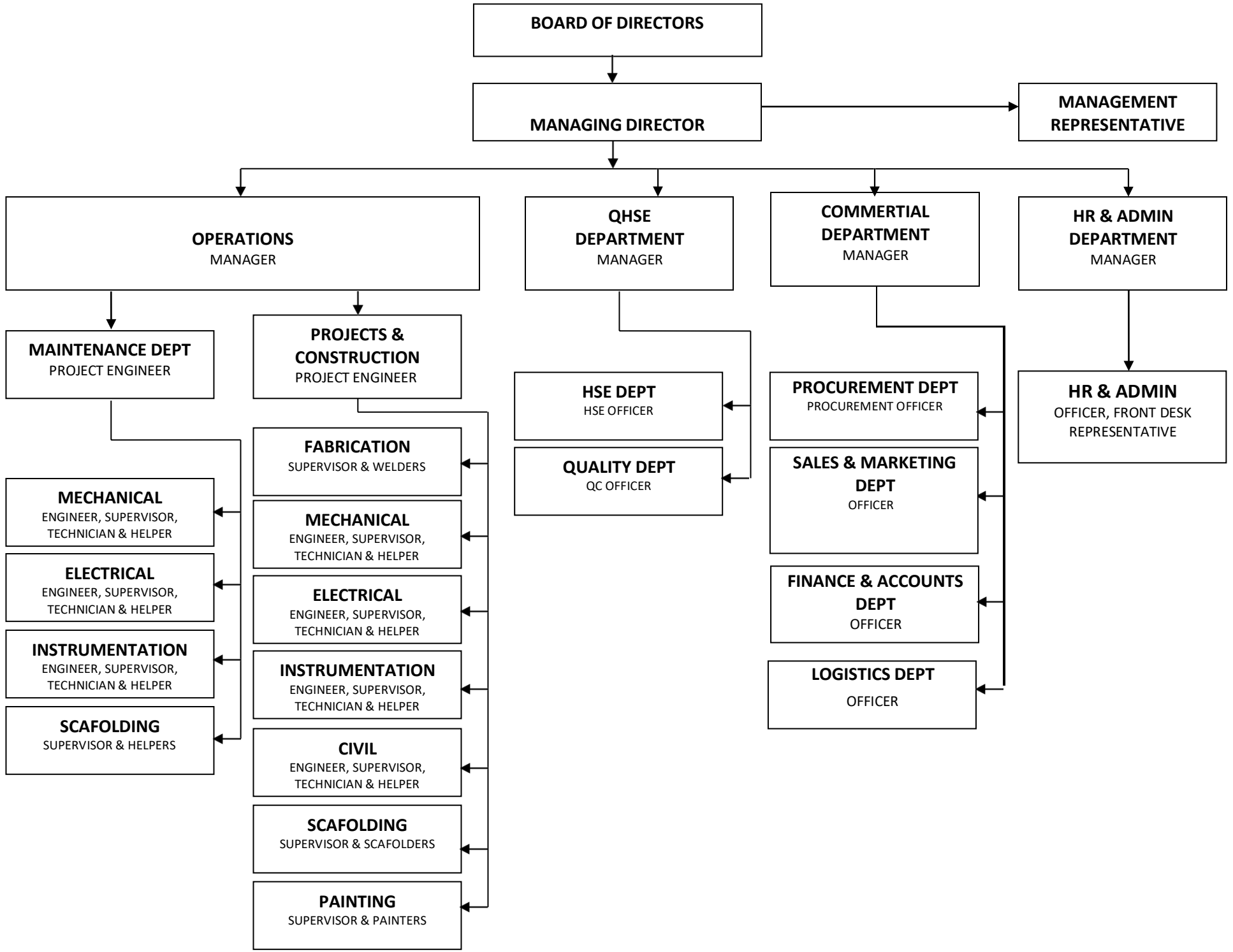
**Thank you . . . .**

**Contact Us**

**[sales@somsco.com](mailto:sales@somsco.com)**

**Business WhatsApp**

**+968 7277 7312**



**BOARD OF DIRECTORS**

**MANAGING DIRECTOR**

**MANAGEMENT REPRESENTATIVE**

**OPERATIONS MANAGER**

**QHSE DEPARTMENT MANAGER**

**COMMERCIAL DEPARTMENT MANAGER**

**HR & ADMIN DEPARTMENT MANAGER**

**MAINTENANCE DEPT**  
PROJECT ENGINEER

**PROJECTS & CONSTRUCTION**  
PROJECT ENGINEER

**HSE DEPT**  
HSE OFFICER

**QUALITY DEPT**  
QC OFFICER

**PROCUREMENT DEPT**  
PROCUREMENT OFFICER

**SALES & MARKETING DEPT**  
OFFICER

**HR & ADMIN**  
OFFICER, FRONT DESK REPRESENTATIVE

**MECHANICAL**  
ENGINEER, SUPERVISOR,  
TECHNICIAN & HELPER

**ELECTRICAL**  
ENGINEER, SUPERVISOR,  
TECHNICIAN & HELPER

**INSTRUMENTATION**  
ENGINEER, SUPERVISOR,  
TECHNICIAN & HELPER

**SCAFOLDING**  
SUPERVISOR & HELPERS

**FABRICATION**  
SUPERVISOR & WELDERS

**MECHANICAL**  
ENGINEER, SUPERVISOR,  
TECHNICIAN & HELPER

**ELECTRICAL**  
ENGINEER, SUPERVISOR,  
TECHNICIAN & HELPER

**INSTRUMENTATION**  
ENGINEER, SUPERVISOR,  
TECHNICIAN & HELPER

**CIVIL**  
ENGINEER, SUPERVISOR,  
TECHNICIAN & HELPER

**SCAFOLDING**  
SUPERVISOR & SCAFOLDERS

**PAINTING**  
SUPERVISOR & PAINTERS

**FINANCE & ACCOUNTS DEPT**  
OFFICER

**LOGISTICS DEPT**  
OFFICER